

## INSTRUCTIONS for INSTALLATION and MAINTENANCE “X-RAY VIEWING BOXES”

The viewing box can support RX films with grip rollers in the upper part and plastic clamps on the sides.

### **INSTALLATION :**

- Attach 2 dowels to the wall and apply 2 hook bolts
- Hang the viewing box to the wall using the special key-shaped holes on the back

If you want to fix it to the wall for enhanced security :

- Attach 2 dowels to the wall
- Remove the plexiglas plate
- Fix the viewing box to the wall with 2 dowels screws through the special key-shaped holes on the back

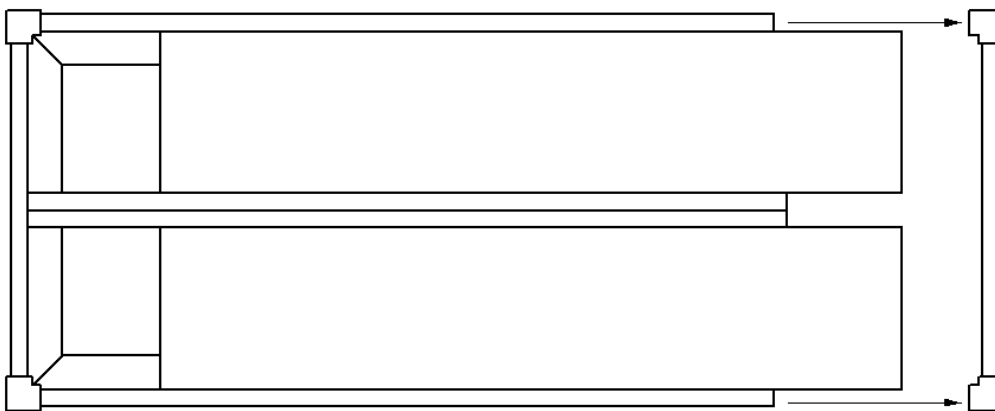
### **MAINTENANCE :**

The viewing box does not need any particular maintenance.

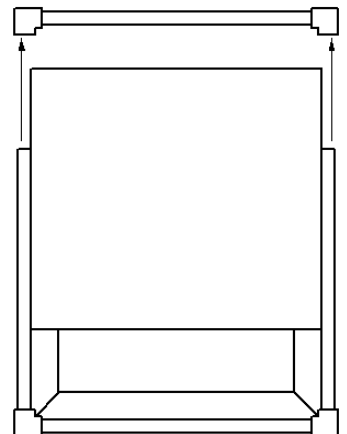
- To clean it use soft cloth and products that do not contain alcohol or solvents

To reach the inner parts, perform the following operations:

- Take off tension to the viewing box
- Unscrew and remove the upper frame, even pulling the corners
- Remove the Plexiglas plate
- To reassemble slide the plexiglas plate, screw on the frame and apply the corners



2 horizontal sectors model



1 sector model  
2 vertical sectors model